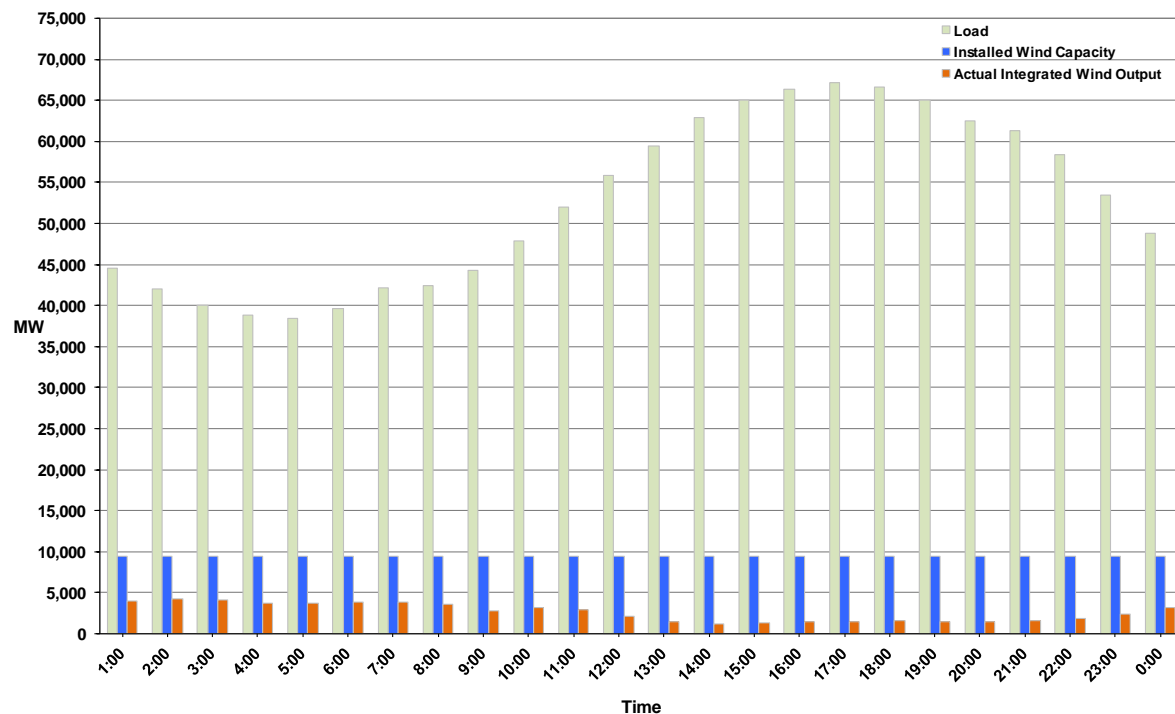




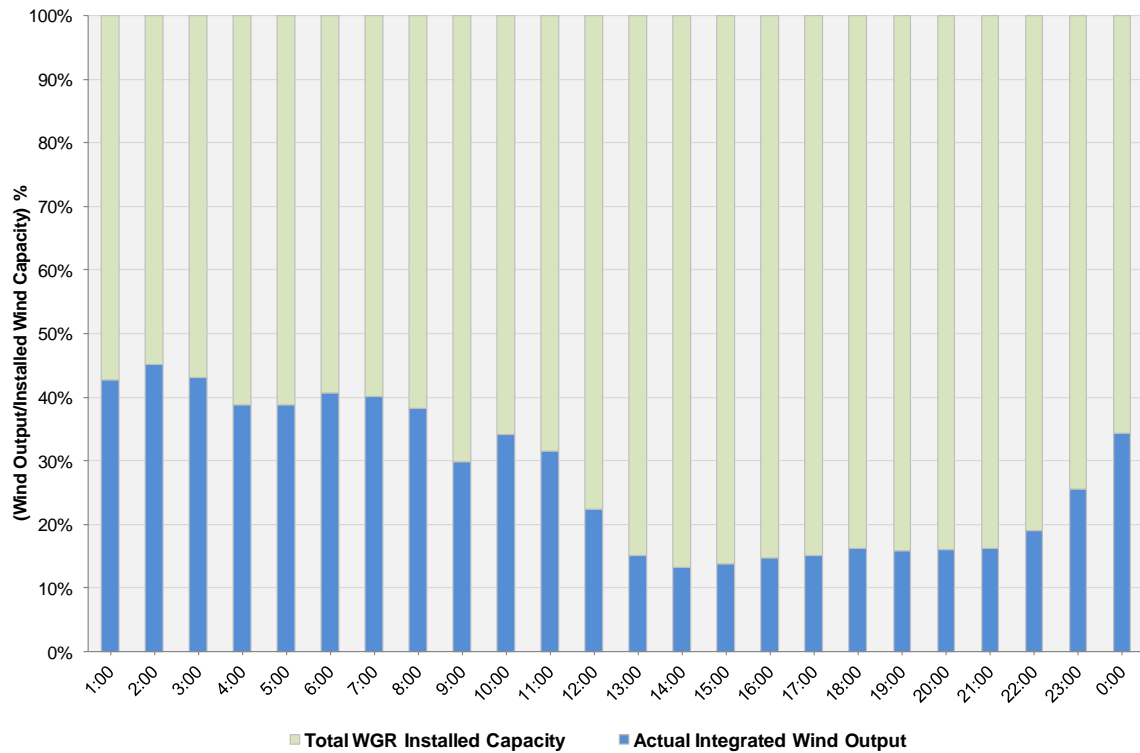
## ERCOT Grid Operations Wind Integration Report: 08/23/11

Peak Load	<b>67,136 MW</b>
Load Peak Hour	<b>17</b>
Wind over Peak	<b>1,430 MW</b>
Wind Record 06/19/11	<b>7,355 MW</b>
Max Wind Value	<b>4,287 MW</b>
Wind Peak Time	<b>01:44:00</b>
Wind Integration %	<b>10.33%</b>

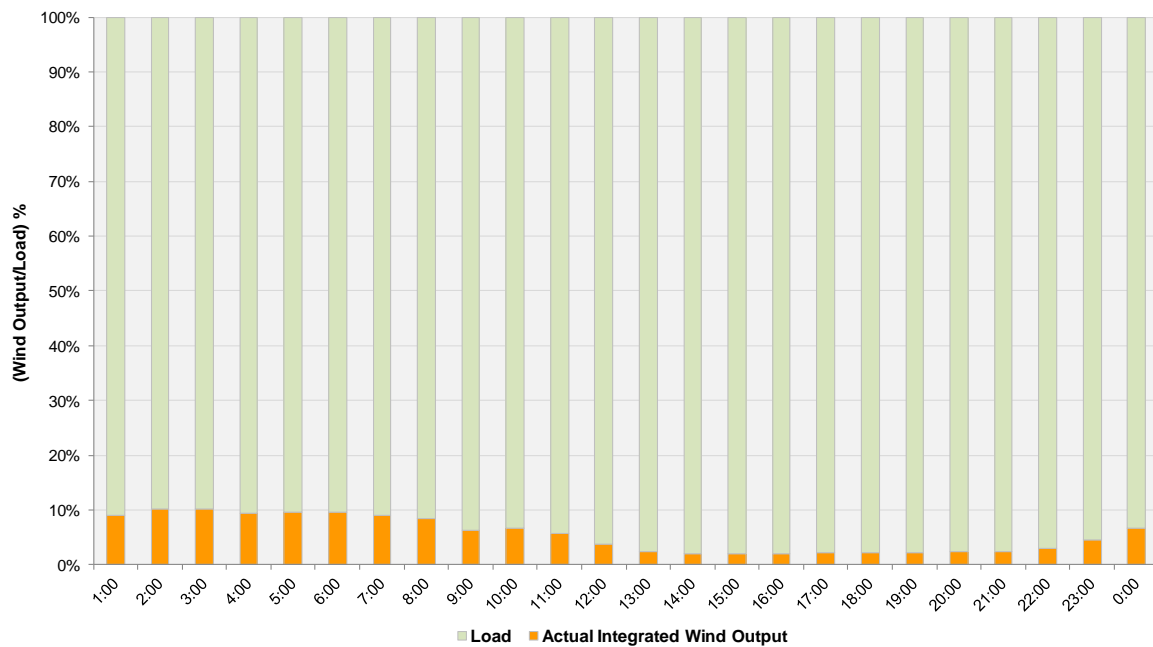
**Hourly Average Actual Load vs. Actual Wind Output  
08-23-2011**



**Actual Wind Output as a Percentage of the Total Installed Wind Capacity**  
**08-23-2011**



**Actual Wind Output as a Percentage of the ERCOT Load**  
**08-23-2011**



ERCOT Load vs. Actual Wind Output 8/16/2011 - 8/23/2011

